

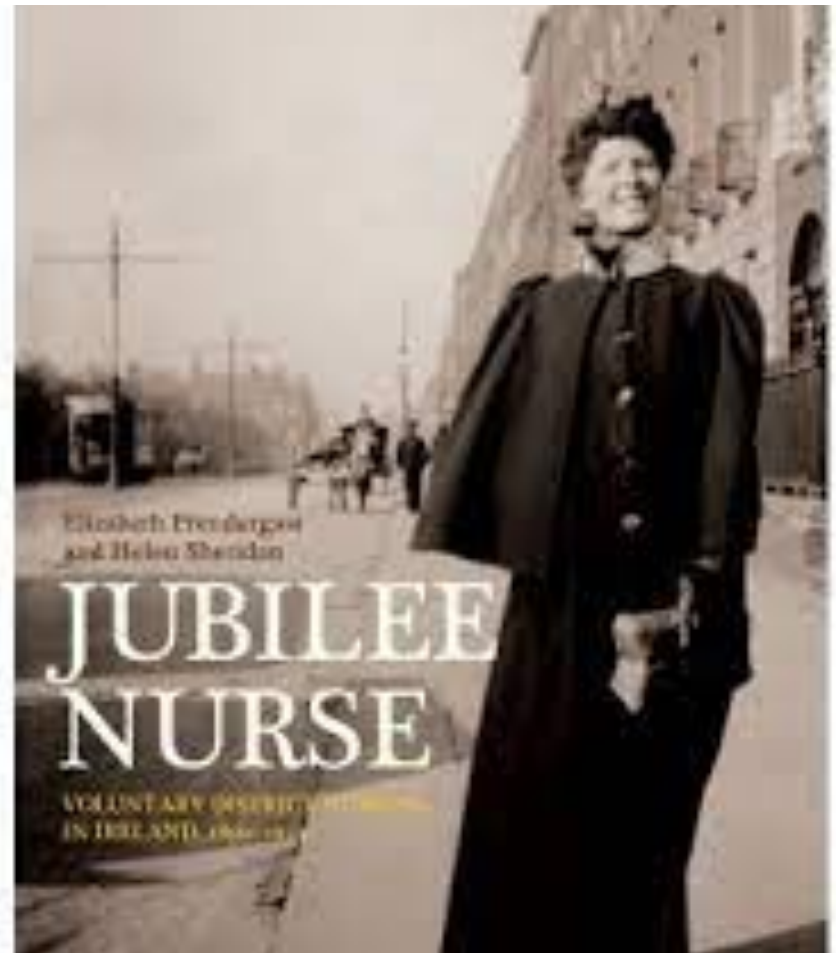
“The Role of Public Health & Community Nurses in Ireland – the Importance of Health Promotion, Prevention and Protection”

Dr Susan Kent

- Professor Associate, Dublin City University, Ireland
- Visiting Professor, University of Genoa, Italy

History of Public & Community Nursing in Ireland

- The Jubilee Nursing service was est. as a response to the Golden celebration of Queen Victoria's reign in 1887. As a practical commemoration a community nursing organisation known as "The Queen Victoria Jubilee Institute of Nurses" was established by private subscription. Run and funded by a committee of affluent women to provide services to the poor and needy. Provided with a cottage and a bicycle.
- Involved the management of a families health and included all aspects of physical, psychological, spiritual and social care.
- Pre 1990s the role was clinical and delivered much of the pre-admission care reducing the need for admission to acute services.



Alma Ata Conference 1978

Primary Health Care as defined at the Alma-Ata conference, called for:

...a revolutionary redefinition of health care. Instead of the traditional "from-the-top-down" approach to medical service, it embraced the principles of social justice, equity, self-reliance, appropriate technology, decentralization, community involvement, intersectoral collaboration, and affordable cost.



Public Health Nursing and Community & Registered General Nursing

- Practical nursing at home is not the same as in the hospital setting.
- The balance of power is shifted to the client and back-up services and equipment are remote.
- Homes are not adapted with unsuitable environments to deliver care.

Skill, flexibility and respect are the hallmarks of a community-based nurse



Community-Based Nursing

- Community-based nursing is constant, flexible flow,
- Not facility-dependent,
- Autonomous practice that adapts & evolves..,
- Clinical nursing governance,
- CBN focus is specifically on Health Prevention, Promotion & Protection.



PHC & Community-Based Nursing practice

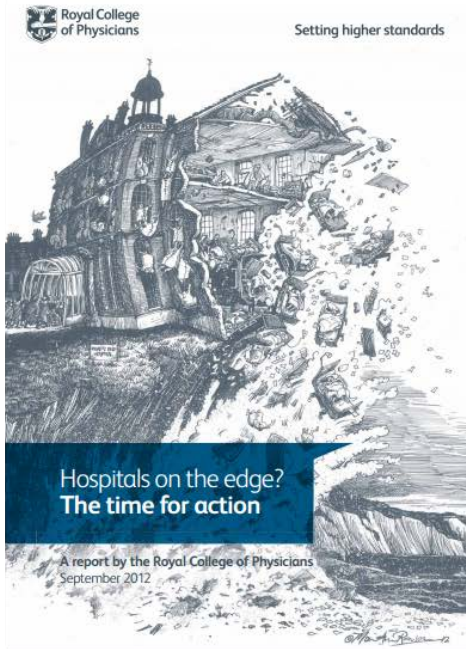
- Therefore, in order for nursing to flourish in the community PHC should be accurately viewed as:
 - a range of activities which are community-based and to which GPs contribute primary medical services as an equal component of the whole enterprise alongside nurses, midwives, other PHC team members, voluntary sector, education, employment and the population served.



The HSE has said it is "engaging with private hospitals to provide services at a number of different levels".

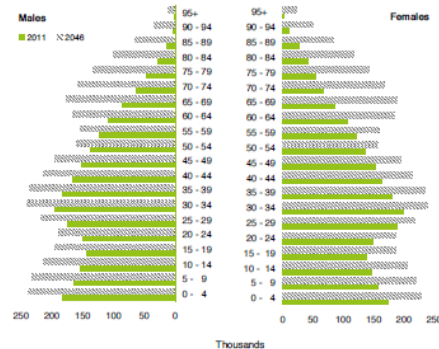
Global Population Health Challenges

CHALLENGES...



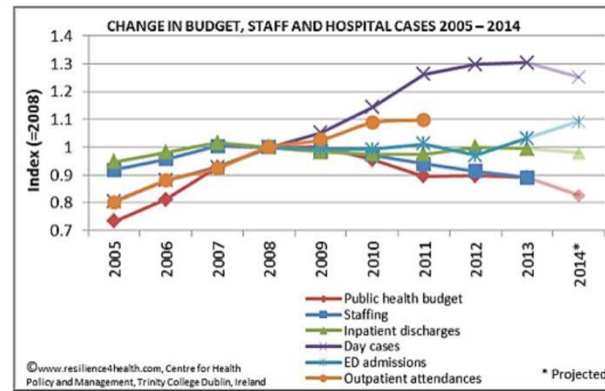
Hospital & Professional -centric
05/05/21 MOC

Figure 2.3: Population pyramid for 2011 and 2046 (M1F1), most optimistic scenario

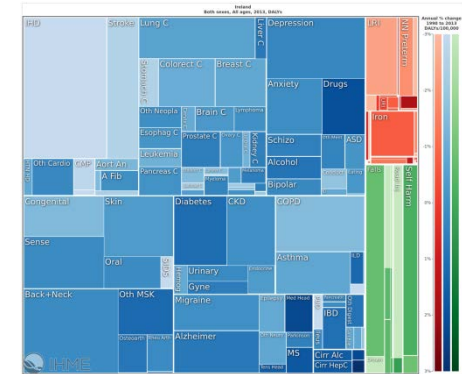


Source: Central Statistics Office, Population and Labour Force Projections 2016–2046²

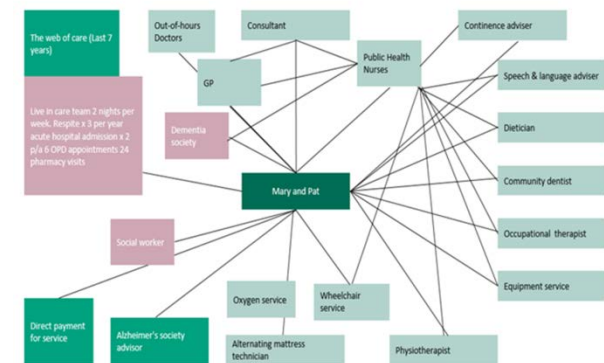
Ageing Population



Money



Chronic Disease & Obesity



Fragmented/Duplicated /Missed Care

10 Common Chronic Conditions for Adults 65+

Quick Facts



80%
have at least 1 chronic condition



68%
have 2 or more chronic conditions



Hypertension
(High Blood Pressure)
58%



High Cholesterol
47%



Arthritis
31%



Ischemic Heart Disease
(or Coronary Heart Disease)
29%



Diabetes
27%



Chronic Kidney Disease
18%



Heart Failure
14%



Depression
14%



Alzheimer's Disease and Dementia
11%

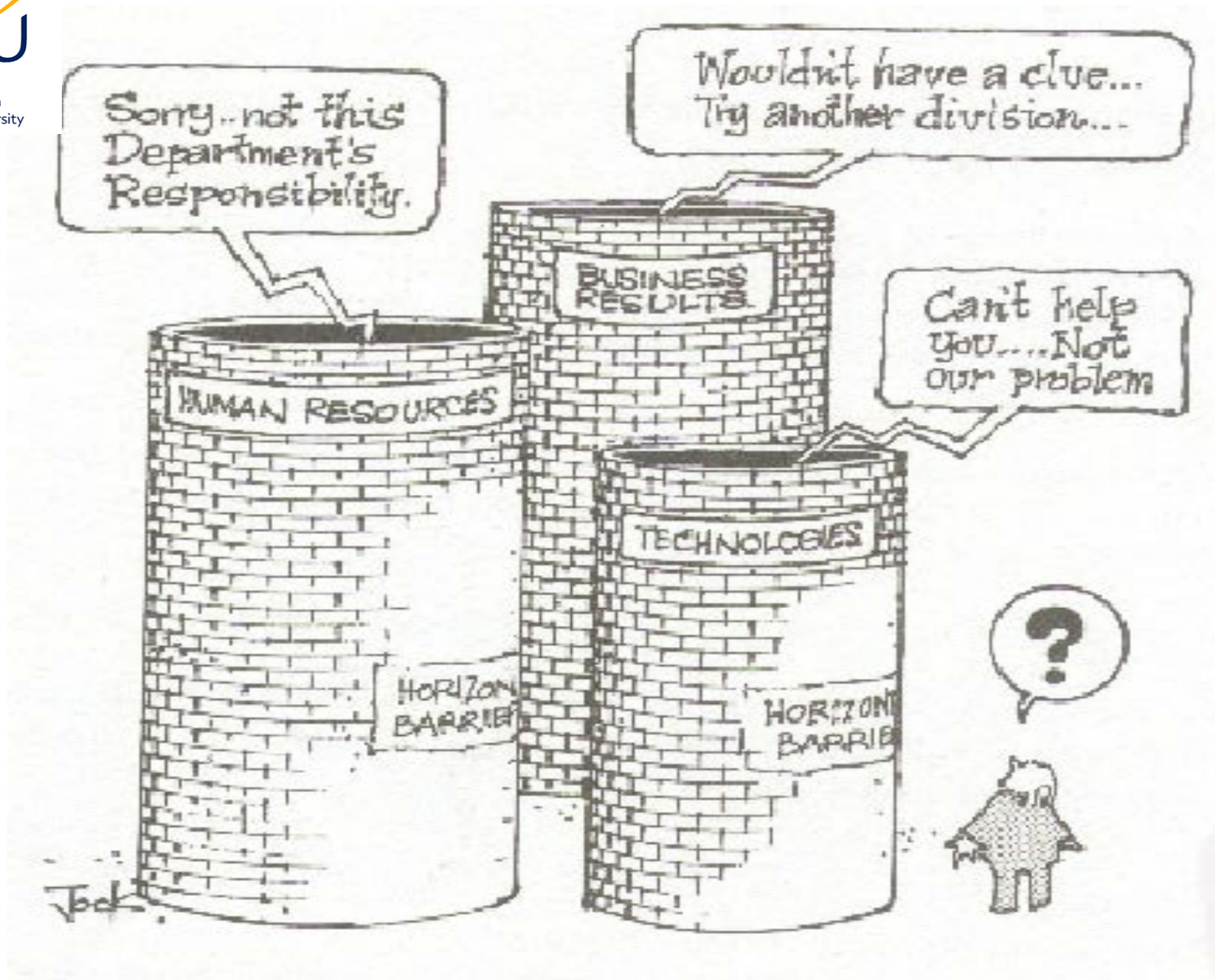


Chronic Obstructive Pulmonary Disease
11%

Source: Centers for Medicare & Medicaid Services, Chronic Conditions Prevalence State/County Table: All Fee-for-Service Beneficiaries, 2015

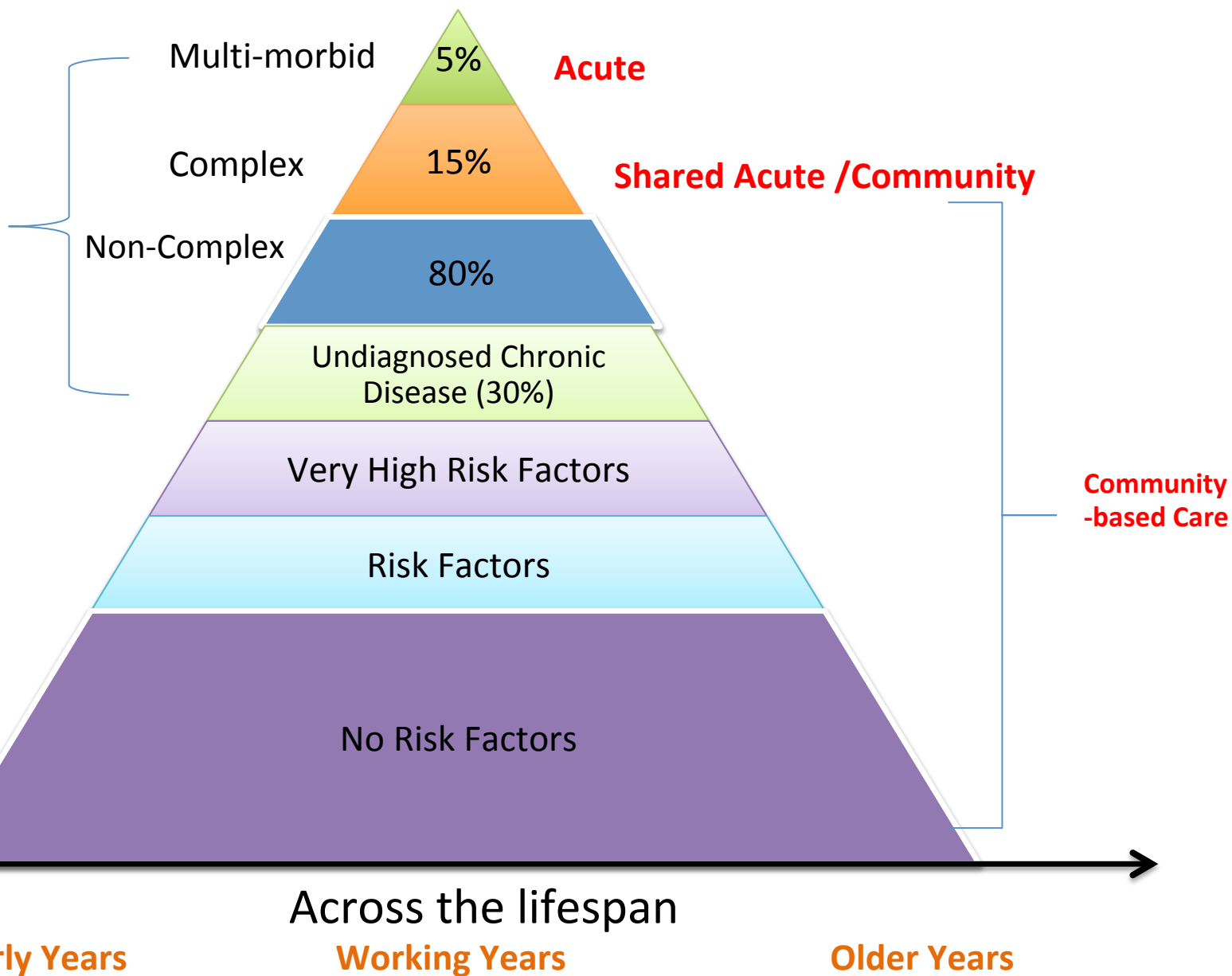
What is Influencing Change?





Population Health Pyramid (WHO, 2018)

Diagnosed
Chronic
Disease

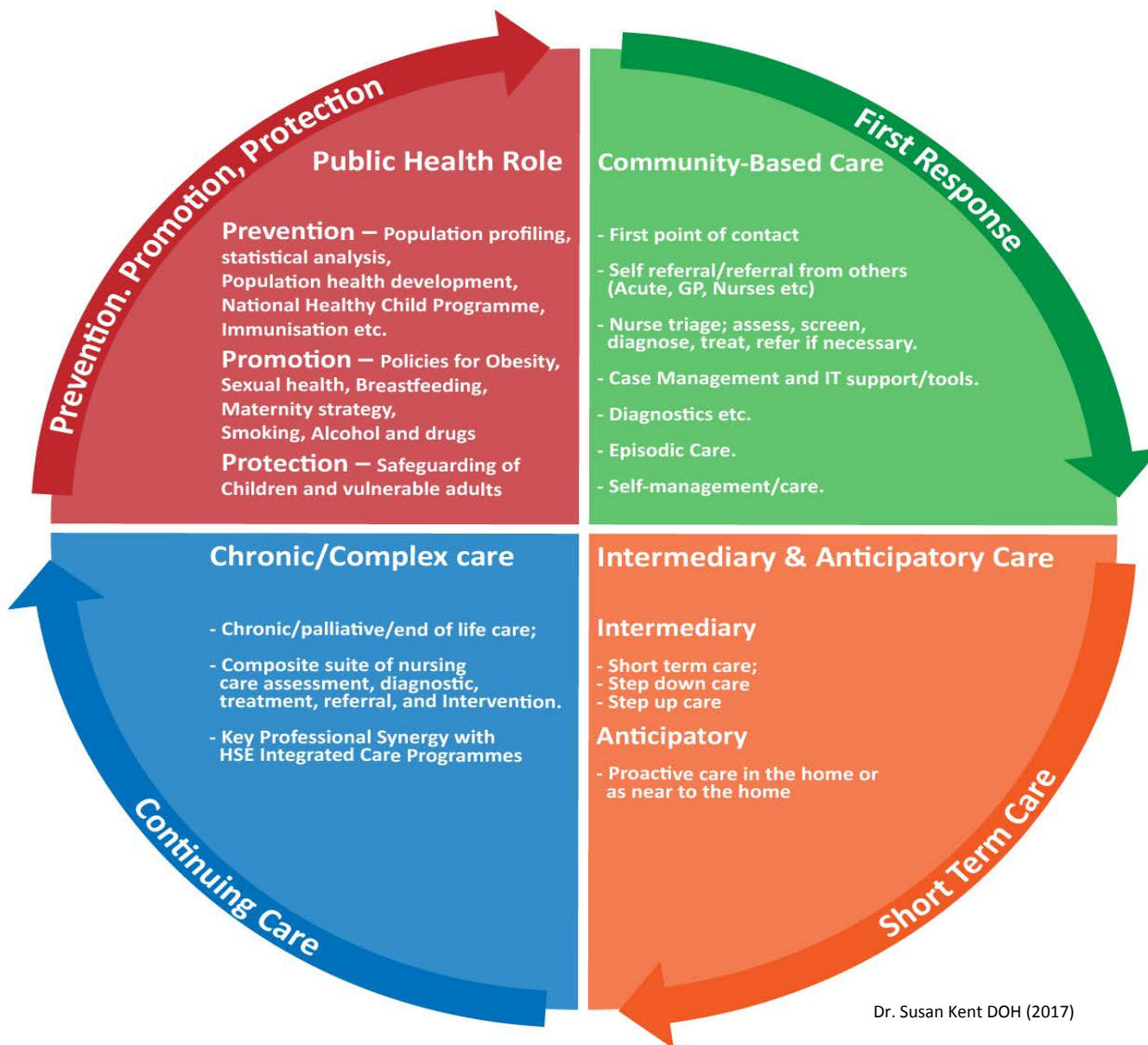


Measuring the Impact of the Nurse

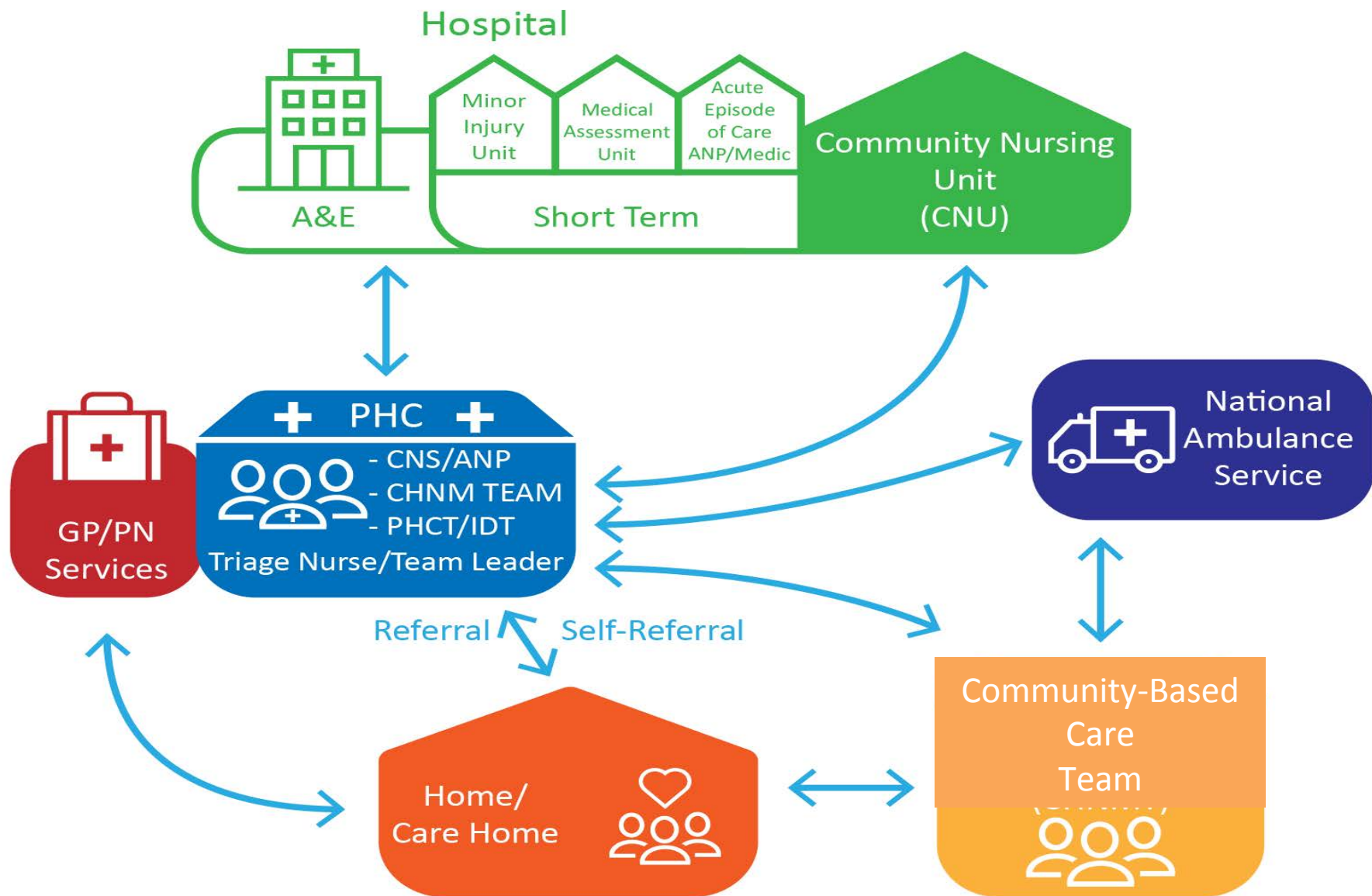


“Right Care, Right Place, Right Time”

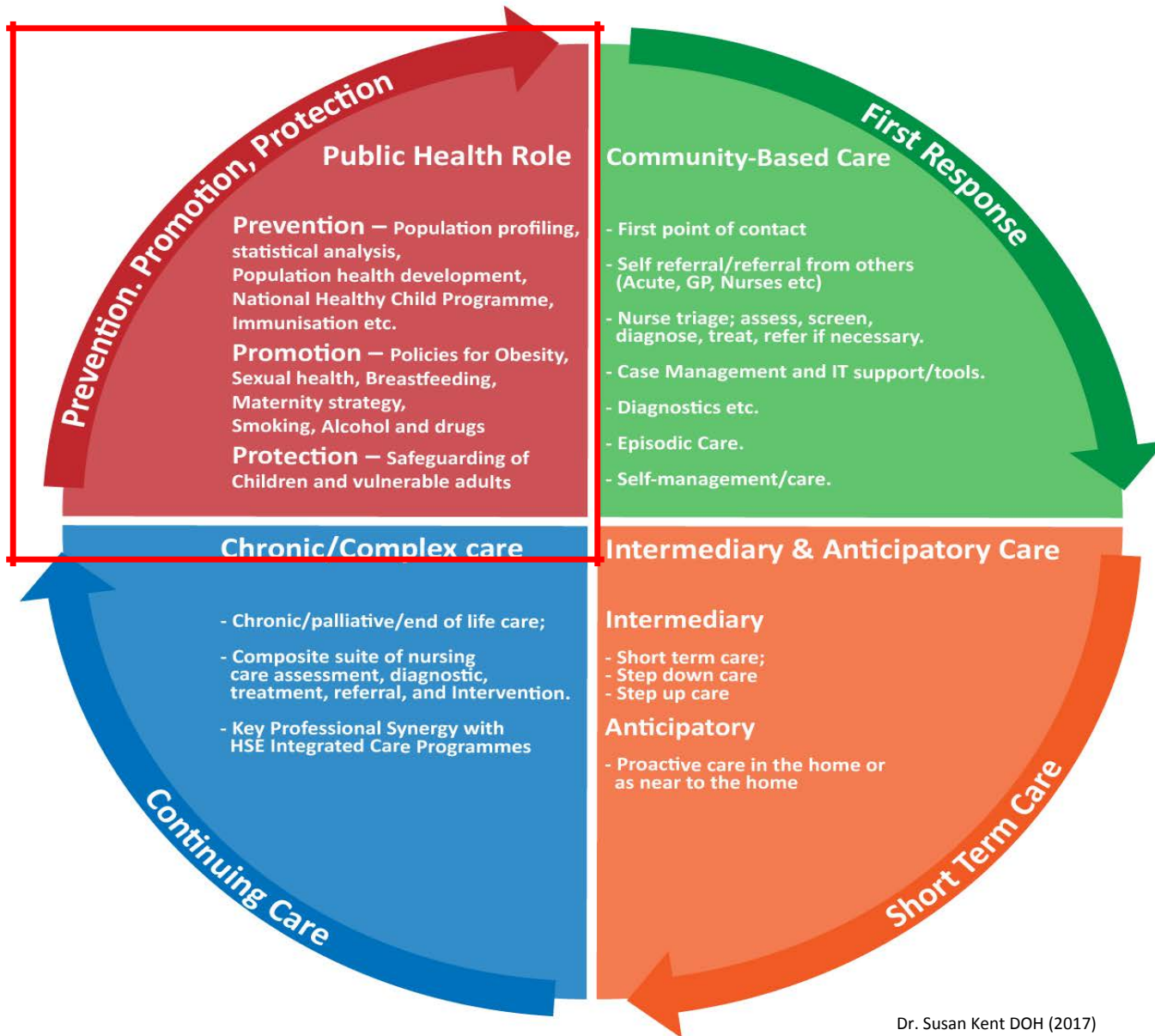
A Model of Integrated Care



Integrated Pathways & Model of Care



A Model of Integrated Care



Future Concerns

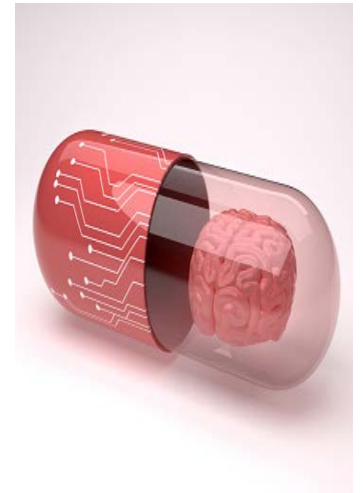
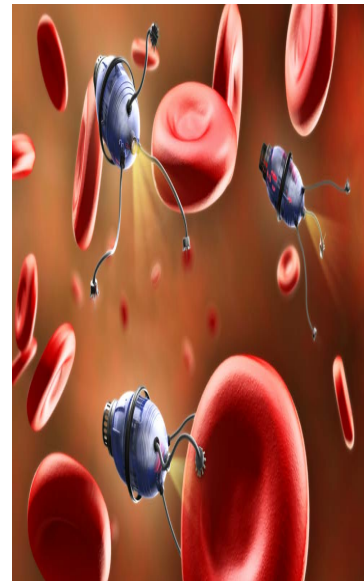
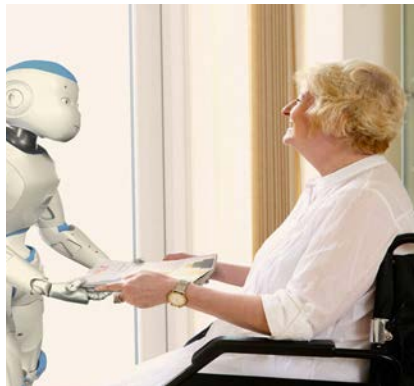
- Availability of services in the community,
- Workforce availability,
- Integration of services and technology
- Shared funding models to demonstrate the impact of what the nurse can deliver for the population,
- Professional challenges,
- Ability to develop interdisciplinary relationships and practices,
- Shift in the availability of Informal carers has impacted on care,
- Residential vs. Congregated settings
 - State savings under challenge now as a result
 - Individual care at home vs group care e.g. Older persons and childcare (removal of informal care)



Challenges - 5 Generations of Nurses Working in Health Care



Info & Bio-Technological Evolution in Healthcare



THE FUTURE



Thank you and please contact me on any of the following:



@Susan_kent2



Instagram

instamomsusan

LinkedIn

<http://linkedin.com/in/dr-susan-kent-61662951>



WeChat QR Code



Susan.kent@dcu.ie



+353876527156